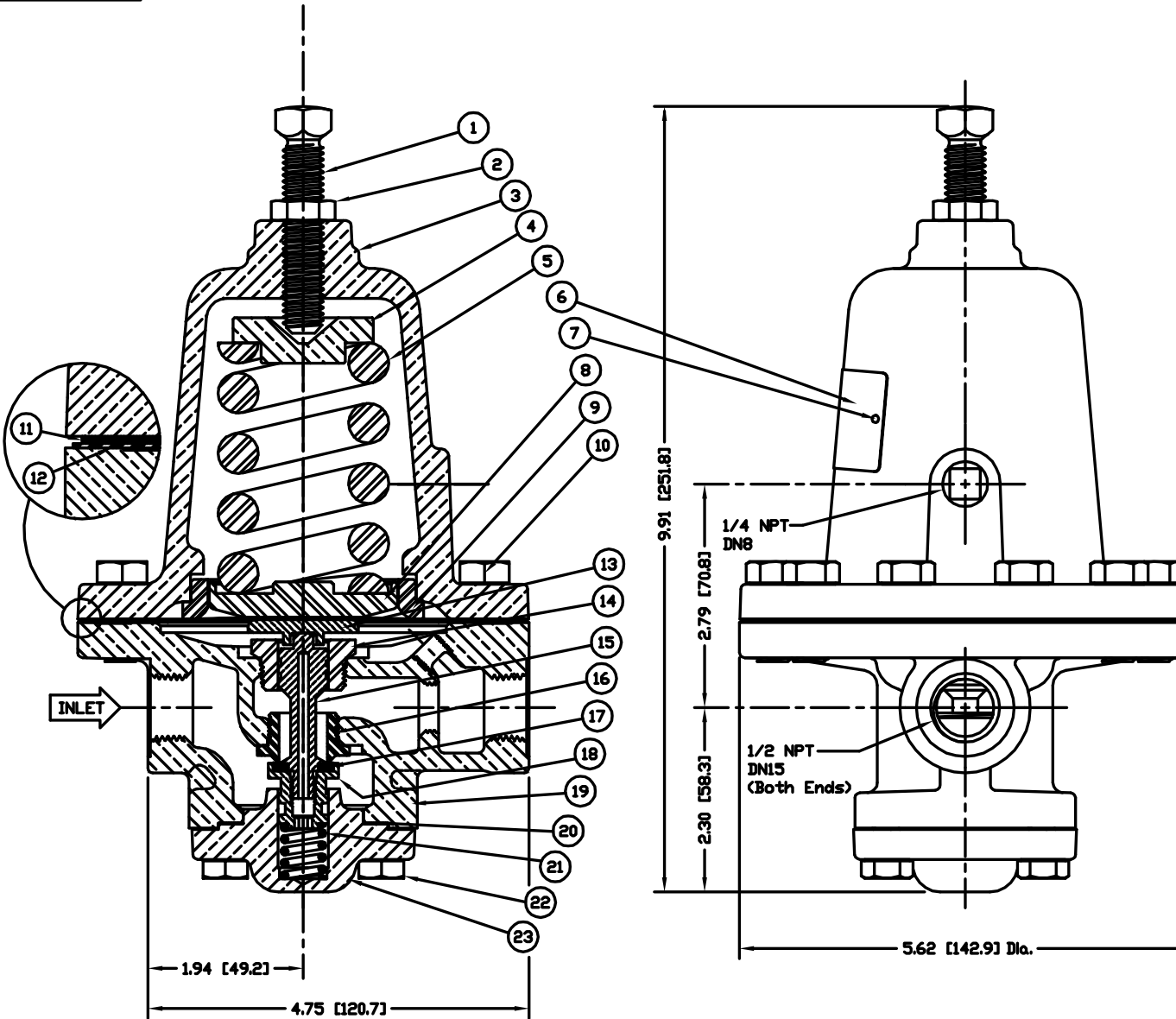


Diversco

23150



LIST OF MATERIALS				
ITEM	QTY	PART NO.	DESCRIPTION	MATERIAL
1	1	16658	Adjusting Screw	316 SST
2	1	05368	Lock Nut	Brass
3	1	09211	Spring Chamber	Bronze
4	1	05185	Spring Button	Brass
5	1	07806	Pressure Spring	SST
6	1	13399	Name Plate	Aluminum
7	2	02533	Drive Screw	SST
8	1	19959	Pressure Plate	316 SST
9	1	17143	Diaphragm Ring	316 SST
10	10	09133	Screw	SST
11	6	09225	Diaphragm	Bronze
12	1	07265	Gasket	Teflon
13	1	09208	Pusher Post Button	Brass
14	1	10057	Guide Bushing	303 SST
15	1	10609	Pusher Post	Brass
16	1	09241	Seat Ring	303 SST
17	1	10059	Seat Disc	Teflon
18	1	09270	Piston	Brass
19	1	09243	Body	Bronze
20	1	10610	Gasket	Teflon
21	1	09273	Piston Spring	SST
22	4	13365	Screw	316 SST
23	1	09275	Bottom Plug	Bronze

NOTES:

1. DIMENSIONS ARE APPROXIMATE.
2. SEE ED2097 FOR MARKING INSTRUCTIONS.
3. SEE ED3003 FOR ASSEMBLY AND TEST INSTRUCTIONS.
4. CLEAN FOR OXYGEN SERVICE.

REV. DATE	REVISION HISTORY



NAME PRESSURE BUILDING VALVE For 200-500 PSI Range) CRYOGENIC	SIZE DOLLARS/INCH OF GAH 07-06-11 1/2 G60 23150	EX2025 07-06-11 1/2 G60 23150
---	--	---