

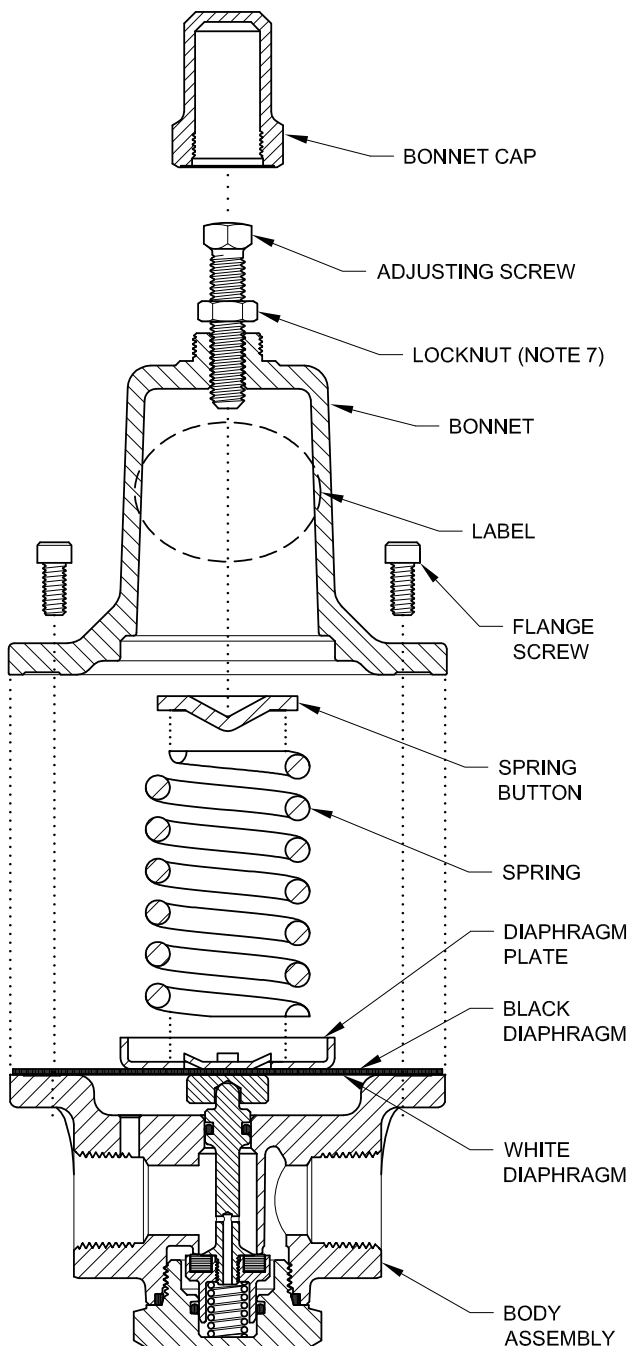


REGO IS A LEADING MANUFACTURER OF GAS AND CRYOGENIC VALVES, REGULATORS AND RELIEF VALVES FOR GAS AND CRYOGENIC STORAGE/DISTRIBUTION SYSTEMS.

Visit Our Website at: www.regoproducts.com

WARNING: Only qualified personnel may perform installation, disassembly, repair and maintenance. All gas must be safely evacuated from the system before starting repairs.

CAUTION: Avoiding the inhalation of, or skin contact with compressed and cryogenic gases is advised. Many of these gases can cause asphyxiation, serious injury, or death. See MSDS for specific information regarding the safe handling of the service gas. Evacuation of gas should take place in a well ventilated area to ensure dispersion. Keep gases far away from open flames or other sources of ignition to prevent fire or explosion.



INSTRUCTIONS FOR CONVERTING SPRING RANGES FOR BR-1780 SERIES REGULATORS

PARTS CONTAINED IN THIS KIT

- (1) SPRING
- (1) LOCKNUT
- (1) LABEL MARKED FOR DELIVERY PRESSURE RANGE
- (1) DIAPHRAGM PLATE
- (1) SPRING BUTTON

DISASSEMBLY

1. Turn off inlet pressure to regulator. Remove bonnet cap, loosen locknut and turn adjusting screw clockwise as far into bonnet as it will go. Evacuate all gas down-stream of the regulator. Remove the regulator from the system.
2. Place regulator in a vise with bonnet facing towards the top.
3. Turn adjusting screw counterclockwise until all spring tension is released.
4. Remove the bonnet screws and save for reassembly.
5. Separate the bonnet from the body. Remove & discard the spring button, spring, and diaphragm plate.
6. Remove the adhesive label from the bonnet and discard.

REASSEMBLY

7. This kit includes a new locknut. If the thickness of the new nut is different than the nut on the adjusting screw, it must be changed to use the locknut provided in this kit.
8. Position the new diaphragm plate centered on the diaphragm.
9. Position the new spring centered on the diaphragm plate. Place the new spring button on the spring.
10. Replace the bonnet with the vent hole positioned as desired or as installed at the factory. (Toward you with inlet end left)
11. Install the flange screws and tighten in a diagonal pattern to 50 in-lb torque.
12. Inspect the area of the bonnet surface that the new label is to be applied. It should be clean for good adhesion. Apply new label supplied with this kit.

CONVERSION TO THE NEW SPRING RANGE IS COMPLETE. SINCE IT HAS BEEN DISASSEMBLED, THE REGULATOR MUST BE BENCH TESTED FOR LEAKAGE BEFORE IT CAN BE REBOXED OR PUT BACK IN SERVICE.

BENCH TEST

1. Using the same maximum inlet pressure as when in service set outlet pressure used in service by turning the adjusting screw clockwise. (Maximum Inlet and Delivery pressure marked on the label may be used.)
2. Using a high quality leak detection solution, check for external leakage at diaphragms, flange screws and bonnet vent holes. None allowed.
3. Once the regulator is placed back in service, check for leaks at the inlet and outlet connections.
4. Refer to the Installation and Operating Instructions boxed with the valve for more detailed instructions for setting delivery pressure, operation and installation.